



Electric Pallet Stackers Capacity 1000 – 1200 kg L 10 B, L 10, L 12

SERIES 379

Safety

Design of the Linde Pallet Stacker is not only good to look at, but also good for protection of the operator. The low skirt ensures that the wheels remain safely within the truck contours. Together with the rounded, smooth shape of the chassis and tiller head, this reduces all risk of injury or damage.

Performance

Their 1.2 kW* drive motor teams up with the Linde Digital Control to achieve a top speed of 6 km/h and optimum productivity. EasyLift® control* allows authentic proportional lifting and lowering. The electronic control switch mounted on the tiller head in convenient reach of either hand has a 60° range of actuation to ensure smooth and precise load movement.

Comfort

Everything the Linde Pallet Stacker is meant to do it does easily. And does most of it faster. Long, ergonomic shape of the tiller centers the operator position on the truck for better visibility through the mast. All controls can be operated with either hand without ever having to let go of the tiller.



Linde Material Handling

Linde

Reliability

Rugged construction makes this a truck to rely on. The Rimflex motor hood is amazingly solid and avoid damage of material. The sturdy mast and the frame of high-grade pressed steel contribute as well, to considerably longer truck lifetime as well as fast, easy and safe load handling.

Service

Linde pallet trucks are designed to reduce maintenance costs, and maintain a very high level of productivity over many years. Swift access to all components, the electronics under sealed aluminium housing preserves from shock, dust, and humidity. Features which play an additional part in keeping the Linde Pallet Truck's uptime up.

*Excluding L 10 B; limited choice of masts.

Technical data

Characteristics	1.1	Manufacturer		LINDE	LINDE
	1.2	Model designation		L10B	L10
	1.3	Power type: Battery, diesel, gasoline, LP gas, AC		Battery	Battery
	1.4	Control type: Manual, pedestrian, stand-on, sit-down, order picker		Pedestrian	Pedestrian
	1.5	Load capacity	Q (kg)	1000	1000
	1.6	Load center	c (mm)	600	600
	1.8	Load distance	x (mm)	700	700
	1.9	Wheelbase	y (mm)	1170	1170
Weights	2.1	Service weight	kg	840	855
	2.2	Axle load with load, front/rear	kg	630/1210	635/1220
	2.3	Axle load without load, front/rear	kg	600/240	605/250
Wheels/Tyres	3.1	Tyres (R = Solid rubber, SE = Superelastic, P = Pneumatic, PU = Polyurethane)		R + PU/PU	R + PU/PU
	3.2	Tyre size, front		230 x 90	230 x 90
	3.3	Tyre size, rear		85 x 85 (85 x 60) ¹⁾	85 x 85 (85 x 60) ¹⁾
	3.4	Additional wheels (dimensions)		150 x 50	150 x 50
	3.5	Wheels, number front/rear (x = driven)		1x + 1/2 (1x + 1/4) ¹⁾	1x + 1/2 (1x + 1/4) ¹⁾
	3.6	Track width, front	b10 (mm)	495	495
	3.7	Track width, rear	b11 (mm)	380/500	380/500
Dimensions	4.2	Mast height, lowered	h1 (mm)	1915*	1990 ²⁾
	4.3	Free lift	h2 (mm)	-	150
	4.4	Lift	h3 (mm)	1462 ²⁾	2924 ²⁾
	4.5	Mast height, raised	h4 (mm)	1998 ²⁾	3402 ²⁾
	4.6	Initial lift	h5 (mm)	-	-
	4.9	Tiller height, travel position, min/max	h14 (mm)	775/1108	775/1108
	4.15	Lowered fork height	h13 (mm)	86	86
	4.19	Overall length	l1 (mm)	1800	1800 (1600) ³⁾
	4.20	Head length	l2 (mm)	650	650
	4.21	Overall width	b1/b2 (mm)	800	800
	4.22	Fork dimensions	s/e/l (mm)	50 x 180 x 1150	50 x 180 x 1150
	4.25	Fork spread	b5 (mm)	560/680	560/680
	4.32	Ground clearance, center of wheelbase, min/max	m2 (mm)	30	30
	4.33	Aisle width, 1000 x 1200 pallet crosswise	Ast (mm)	2235	2235
	4.34	Aisle width, 800 x 1200 pallet lengthwise	Ast (mm)	2205	2205
4.35	Turning radius	Wa (mm)	1365	1365	
Performance	5.1	Travel speed, with/without load	km/h	6.0/6.0	6.0/6.0
	5.2	Lift speed, with/without load	m/s	0.09/0.12	0.10/0.13
	5.3	Lower speed, with/without load	m/s	0.36/0.16	0.35/0.20
	5.8	Maximum gradeability with/without load	%	10/10	10/10
	5.10	Service brake		Mechanical	Mechanical
Drive	6.1	Traction motor (60 minutes rating)	kW	0.9	1.2
	6.2	Lift motor (S3, 15% rating)	kW	1.5	1.5
	6.3	Battery standard		British Standard	British Standard
	6.4	Battery voltage, nominal capacity 5h rating	V/Ah	24/180	24/180
	6.5	Battery weight	kg	190	190
8.1	Drive controller		LDC with microprocessor	LDC with microprocessor	

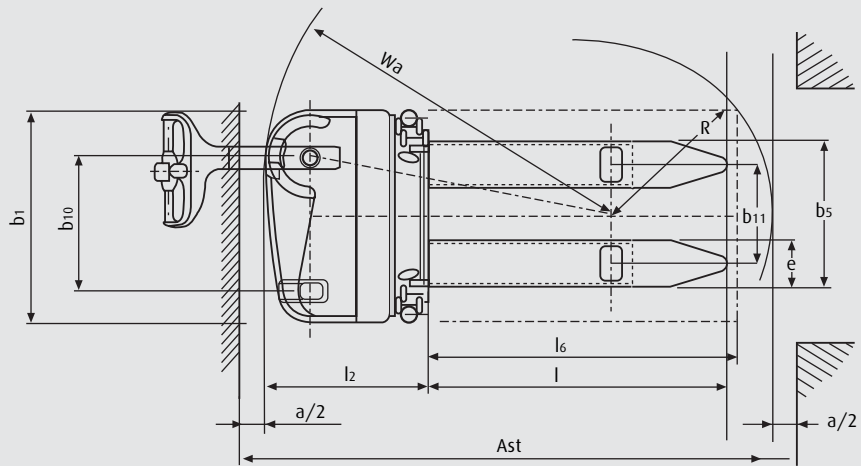
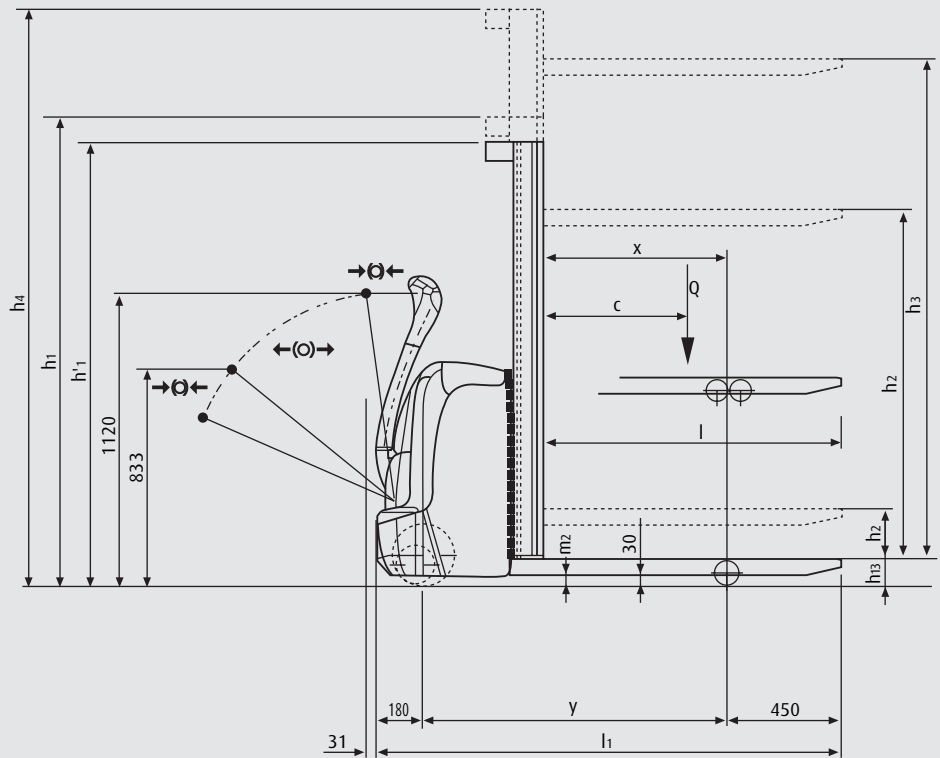
¹⁾ Figures in parentheses for tandem load wheels (optional)

²⁾ See adjacent table for other mast heights

³⁾ Figures in parentheses for 950mm fork length

* L10B only with mast 1462 E, 1612 E & 2424 S

LINDE
L 12
Battery
Pedestrian
1200
600
700
1170
865
705/1360
615/250
R + PU/PU
230 x 90
85 x 85 (85 x 60) ¹⁾
150 x 50
1x + 1/2 (1x + 1/4) ¹⁾
495
380/500
1990 ²⁾
150
2924 ²⁾
3402 ²⁾
-
775/1108
86
1800 (1600) ³⁾
650
800
50 x 180 x 1150
560/680
30
2235
2205
1365
6.0/6.0
0.11/0.20
0.35/0.20
10/10
Mechanical
1.2
1.55
British Standard
24/180
190
LDC with microprocessor



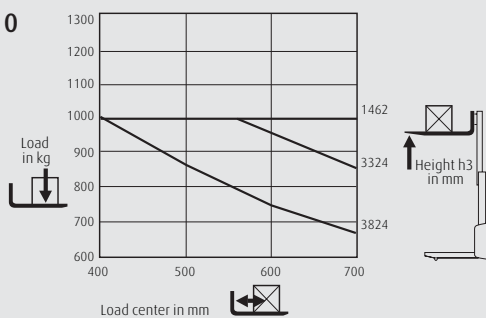
$$Ast = Wa + \sqrt{(l_6 - x)^2 + \left(\frac{b_{12}}{2}\right)^2} + a$$

$$Ast = Wa + R + a$$

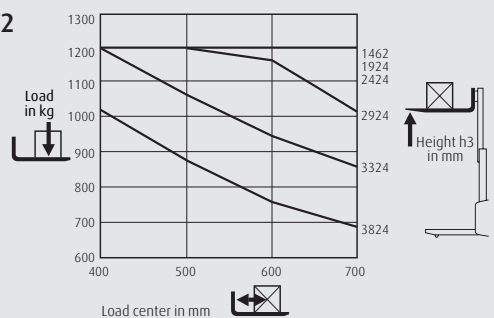
Safety clearance $a = 200$ mm

Lifting capacity diagrams

L10



L12





Masts (L10/L12) (in mm)	1462 E	1612 E	1924 S	2424 S	2924 S	3324 S	3824 S	4224 S	1924 D	
Lift	h3	1462	1612	1924	2424	2924	3324	3824	4224	1924
Lift + fork height	h3	1548	1698	2010	2510	3010	3410	3910	4310	2010
Height lowered	h1/h'1	1915	2065	1490	1740	1990	2190	2440	2640	1415
Height raised	h4	1920	2148	2402	2902	3402	3802	4302	4702	2402
Free lift	h2	1312	1462	150	150	150	150	150	150	960

Masts (L10/L12) (in mm)	2424 D	2924 D	3324 D	3824 D	4224 D	3516 T	3966 T	4224 T	
Lift	h3	2424	2924	3324	3824	4224	3516	3966	4224
Lift + fork height	h3	2510	3010	3410	3910	4310	3430	4052	4310
Height lowered	h1/h'1	1665	1915	2115	2365	2564	1665	1815	1915
Height raised	h4	2902	3402	3802	4302	4702	-	-	-
Free lift	h2	1210	1460	1660	1910	2110	1129	1279	1379

Equipment

Standard equipment

Proportional lift and lower control integrated in tiller head
(EasyLift®)*

Digital LDC control

Cushion drive wheels

Single polyurethane load wheels

Mast protections (polycarbonate or mesh)

Clipboard

Horn

Key switch

Mechanical brake

Protection -10°C

Optional equipment

Other mast types and lift heights (to 4,266 mm with or without
free lift)

Wide range or drive wheels

Tandem polyurethane load wheels

Supplementary battery cable and connector

Load backrests

Built-in chargers

Cold store version -35°C (not on the L10B)

Other options available on request

Features

Compact for maneuverability

- Excellent stability resulting from low center of gravity
- Four-point support for high residual capacities
- Compact measurements and small turning radius
- Chassis no wider than the pallet carried
- Well-balanced design



Rimflex hood

- Extremely strong, lasts through the lifetime of the truck
- Wide and deep storage space for wrapping paper, writing utensils, etc.

Chassis

- Rounded contours clear of sharp edges
- Robust pressed steel construction
- Low chassis skirt for operator safety

Brakes

- Efficient mechanical braking by moving tiller to fully up or down position
- Automatic braking on releasing butterfly switch or reversing direction
- Truck slows before coming to a stop, remaining under total control at all times

Batteries and chargers

- Batteries from 180 Ah to 200 Ah capacity
- Built-in 20 A high-frequency charger (optional)
- Wide range of standard and wall-mount chargers



Tiller

- Superb protection for operator's hands
- Tiller head aligned with truck center, giving an operator position that ensures greater safety and better visibility
- Long tiller provides ample safety clearance between operator and truck chassis
- Low tiller mounting point makes truck easy to steer around sharp turns

Motor

- Powerful, smooth-running motor, 1.2 kW (at 100 % performances)
- Gradeability 12 % fully loaded
- Top speed 6 km/h, loaded or unloaded

Other features

- Single polyurethane load wheels
- Linde Digital Control, configurable performance parameters
- Automatic braking
- Various mast types: simplex, standard, duplex*, triplex*
- Electric horn
- Key switch

*Excluding L 10 B; limited choice of masts.

Subject to change in the interests of progress. Illustrations and technical details non-binding. All dimensions subject to customary tolerance.